



Rabbit anti GluR4 (Phosphoserine 861) Polyclonal Antibody

Alternative Name(s): GLUR4; GLURD; GluA4; GLUR4C; NEDSGA; GluA4-ATD

Order Information

- **Description:** GluR4 (pS861)
- **Catalogue:** 631-030
- **Lot:** See label
- **Size:** 100ug/200ul
- **Host:** Rabbit
- **Clone:** nan
- **Application:** IHC(P), WB, IP
- **Cross Reactivity:** Hu, Ms, Rt

ANTIGEN PREPARATION

A synthetic phosphospecific peptide EAIRNKARL-S*-ITGS

BACKGROUND

GLUR4 is a Glutamate receptor. It is belonged to the predominant excitatory neurotransmitter receptors in the mammalian brain and are activated in a variety of normal neurophysiologic processes. These receptors are heteromeric protein complexes composed of multiple subunits, arranged to form ligand-gated ion channels. The classification of glutamate receptors is based on their activation by different pharmacologic agonists. The phosphorylation of GLUR4 may play an important roles in its signal transduction.

PURIFICATION

The Rabbit IgG is purified by site-modified Epitope Affinity Purification.

FORMULATION

25mM Tris-Buffered Saline (pH7.2-7.8) with 0.01% NaN₃ + antibody stabilizer

SPECIFICITY

This antibody recognizes phosphorylated Serine 861 of human GluR4 protein (RNKARLSITGS). It does not recognize the non-phosphorylated CluR4 or other phosphorylation sites.

STORAGE

The antibodies are stable for 24 months from date of receipt when stored at -20oC to -70oC. The antibodies can be stored at 2oC-8oC for three month without detectable loss of activity. Avoid repeated freezing-thawing cycles.

APPLICATIONS/SUGGESTED WORKING DILUTIONS*

- Western Blot: 0.1-1 µg/ml
- ELISA: 0.01-0.1 µg/ml
- Immunoprecipitation: 2-5 µg/ml
- IHC: 2-10 µg/ml
- Flow cytometry: 5-10 µg/10⁶ cells
- MW (kDa): 100 kDa
- Positive Control: Kidney Tissue
- Cellular Location: Cell Membrane

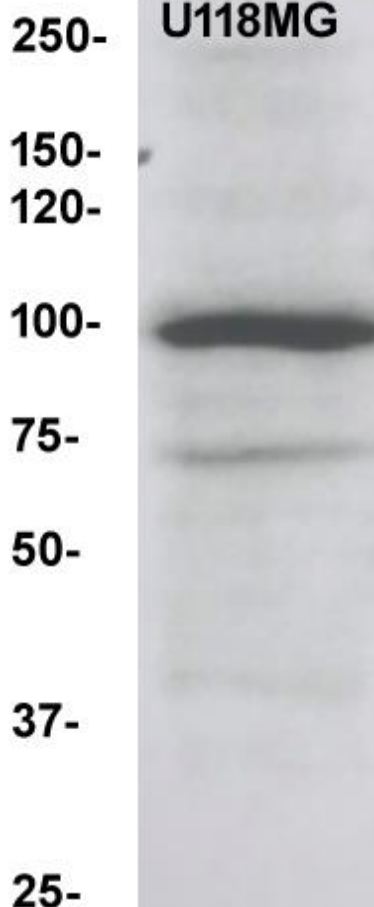
*Optimal dilutions should be determined by researchers for the specific applications.

FOR RESEARCH USE ONLY.

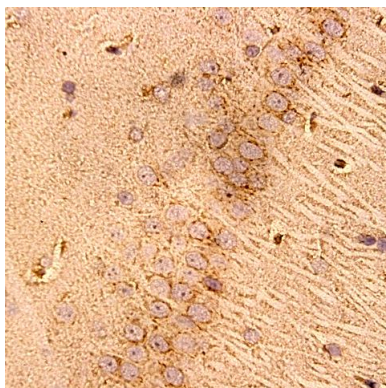
AbboMax, Inc 2528 Qume Drive, Suite 8, San Jose, California 95131, USA
1 408-573-1898 (Tel). 1 408-573-1858 (Fax). www.abbomax.com info@abbomax.com

DATA ATTACHMENTS

MW (kDa)



Western Blot: The cell lysate derived from brain cell line (U118MG) was resolved onto 12% SDS-PAGE and immunoblotted by Rabbit anti GluR4 (pS861) (Cat# 631-030) at 1:500. An immunoreactive protein was observed around 100 kDa.



Immunohistochemistry: Rat brain (FFPE) stained with Rabbit anti GluR1 (pS849) (Cat# 631-010) at 1:200 for 10 min @ RT. Staining of formalin-fixed tissue requires boiling tissue sections in 10 mM Citrate Buffer, pH 6.0 for 10 min followed by cooling at RT for 20 min.

REFERENCES

FOR RESEARCH USE ONLY.